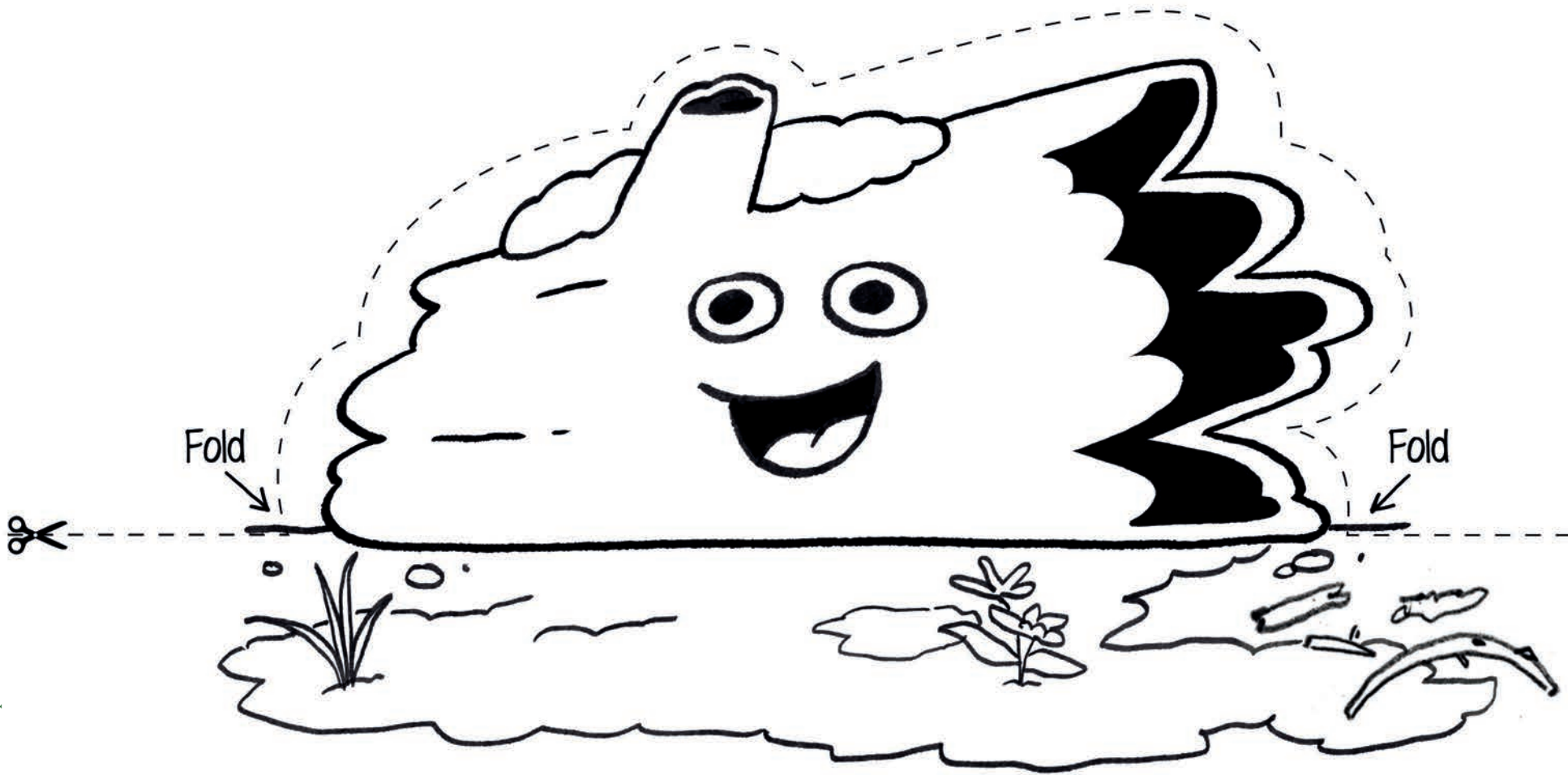
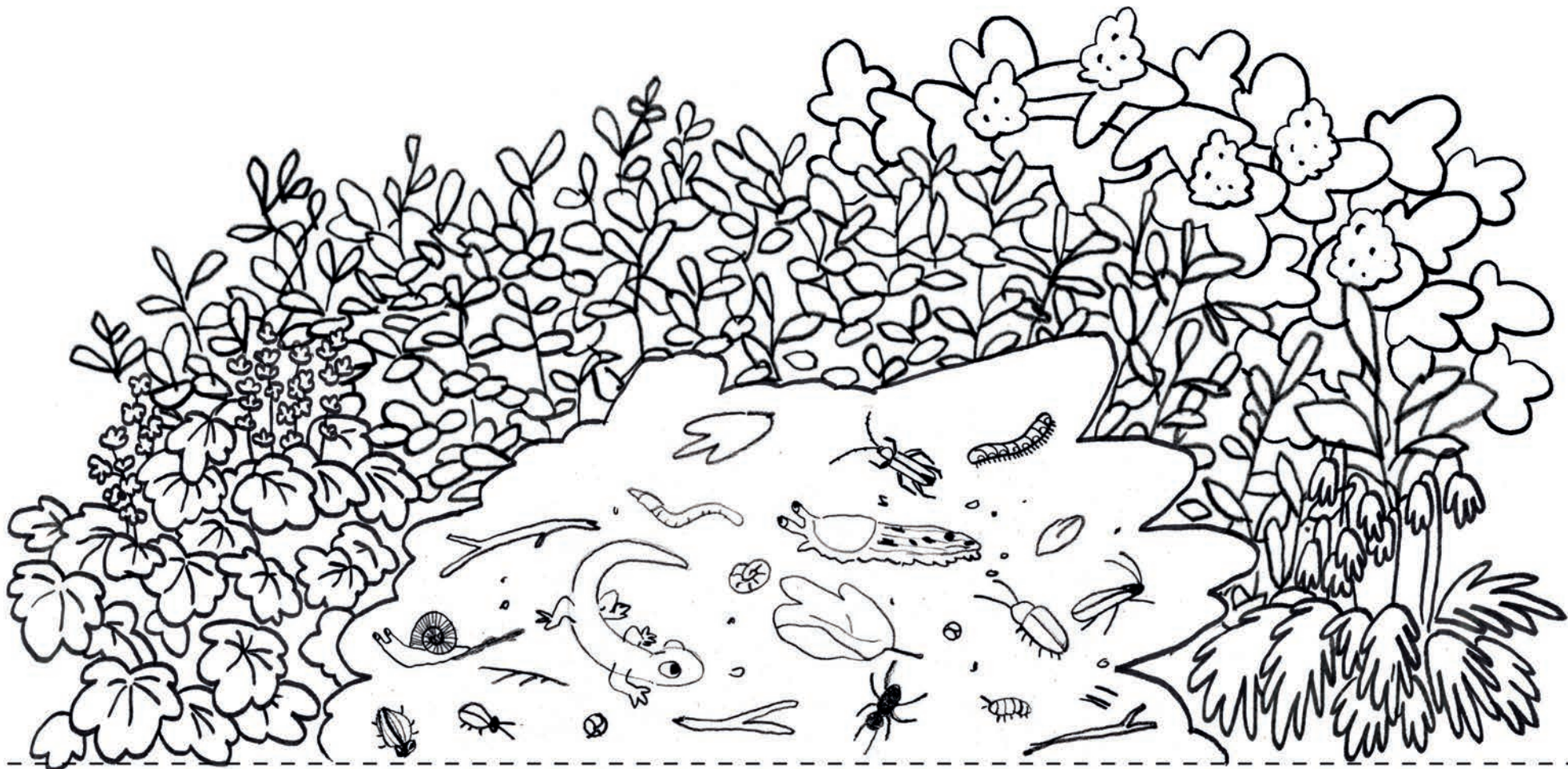


**From snails and beetles to flowers and grass,  
color in the log and all the critters that pop by for a visit.**





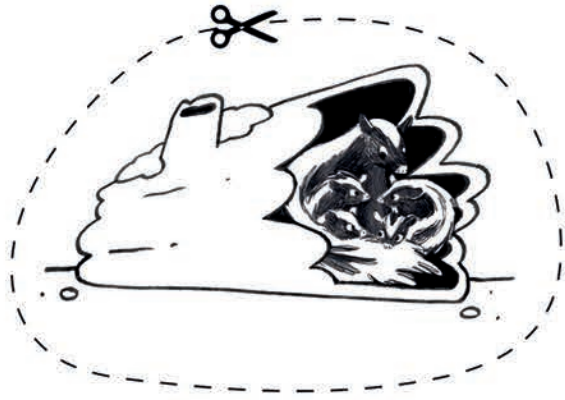
↪ Glue below this line and then place your log from page 1 here.

Up, down, and all around—help the bark beetle find his way through the maze. Can you name all the other plants and animals on this page?



Answers: lichen, ants, turkey tail mushroom, fungi, moss

Color in the different stages in a log's life cycle. How do you think the log is feeling in each one?



Once you have colored them all in, cut out each masterpiece and place them in the order in which they happen in a log's life cycle!

Did you add faces to any of the pictures? Try acting out how the log feels in each one. See, it's not boring being a log at all!

# WORDS IN THE WOODS!



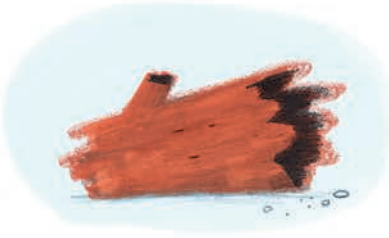
Find the following words in the search below:

**BEETLE, SLUG, CONIFER, HUMUS, LOG, TREE, DECOMPOSE, WORM, SEED, SKUNK, BIRD, SUNLIGHT, HABITAT**

O	C	U	C	O	N	I	F	E	R	G	B	H	E
G	S	N	O	K	S	U	B	M	B	E	D	L	E
I	P	E	T	B	R	S	E	N	A	T	E	I	D
H	A	B	I	T	A	T	E	I	L	R	E	E	M
K	L	R	P	S	H	I	R	L	O	A	E	E	R
S	O	S	E	E	S	S	T	R	G	S	E	L	O
E	G	L	B	U	R	K	T	K	A	U	H	E	W
I	S	U	N	L	I	G	H	T	K	T	G	A	L
D	W	A	I	H	S	U	M	U	H	E	T	E	U
B	E	E	T	L	E	G	C	D	C	E	K	R	S
E	W	G	T	R	B	N	K	C	H	N	O	T	L
E	N	F	S	D	N	N	L	U	U	T	D	R	U
D	L	D	R	I	B	M	U	K	H	C	U	C	G
D	E	C	O	M	P	O	S	E	S	S	R	I	N



# This Is a Log's True-Life Story



**A TREE BECOMES A LOG:** A log's fascinating "life" begins when a tree dies and eventually falls to the forest floor.



**A LOG IS A HOUSE:** A decomposing log makes a perfect home. Holes that develop in the decaying log are a great place to hide from predators and provide shelter from the sun and cold weather. Birds, foxes, owls, rodents, bugs, reptiles, and slugs are just a few of the animals that might want to live in a log.



**A LOG IS FOOD:** Bugs, fungi, lichens, microbes, and worms eat and poop out the log, breaking down the log over many, many years into a very nutrient-rich and loose material in soil called "humus." Humus contains valuable nutrients like nitrogen, phosphorus, potassium, magnesium, sulfur, and calcium, which plants need to help them grow and stay healthy.



**A LOG IS A GARDENER:** Forest plants thrive on and near the decaying log. By falling, the log has made room for sunlight to come into the forest and help things on the forest floor grow. The log absorbs rain and holds it like a sponge, making it a great place for moss and other plants, like ferns, to grow.

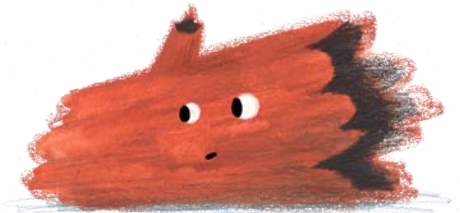


**A LOG IS A HELPER:** A seed might fall on the log and sprout into a baby tree (or "sapling"). The sapling's roots will grow thick and strong as the log continues to decompose, turning into soil and reintegrating with the forest floor. Eventually, this sapling will grow into an old tree and even die someday. Then, its fascinating life as a log can begin.

# HOW ARE YOU FEELING?

## Match the feeling

- Draw a line from each log to the feeling word that matches its face.
- Circle which feeling best describes you right now.  
(There are no wrong answers!)



**HAPPY**

**UNAMUSED**

**SURPRISED**

**CURIOUS**

**CONTENT**

**EXCITED**

**FULL OF SONG**

**TRYING YOUR BEST**